



STUDENT MANAGEMENT POLICY

RATIONALE

All students, families and staff within the Holy Rosary community have the right to a safe and supportive learning environment that embraces the teachings of Jesus. To support this, we strive to foster and encourage positive behaviour, compassion, forgiveness and respectful relationships. These values are promoted through the Making Jesus Real and Protective Behaviour programs and are upheld through the implementation of our Code of Conduct, policies and procedures, as well as everyday words and actions by members of the community.

The behaviour of each student at Holy Rosary should be that expected of a Christian person growing and developing within a Christian community. This policy outlines procedures that will assist in maximising teaching and learning while protecting the dignity of each child. The development of responsibility and self-discipline is at the forefront of behaviour management at Holy Rosary and this is reflected throughout our behaviour expectations and procedures.

1. SCHOOL BEHAVIOUR EXPECTATIONS

At Holy Rosary, we strive to Make Jesus Real by following the Gospel values and abiding by the following guidelines.

RESPECT ALL MEMBERS OF THE HOLY ROSARY COMMUNITY

- Use good manners (greet others, keeping eye contact, using 'please' and 'thank you', etc.)
- Strive to make all members and visitors to Holy Rosary feel welcome and valued.
- Be considerate of the personal space of others.
- Be honest and considerate to your peers and teachers.
- Play and work cooperatively and include all classmates.
- Show empathy and kindness to others.
- Learn and let others learn.

BE RESPONSIBLE FOR YOUR OWN LEARNING

- Complete all tasks to the best of your ability.
- Collaborate with others.
- Be punctual.

TAKE PRIDE IN HOLY ROSARY

- Correctly wear the appropriate uniform, at all times.
- Eating food in designated areas.
- Place your own rubbish in the bin.
- Picking up rubbish from around the school grounds.
- Cleaning up assigned area on Friday after lunch.

HOLY ROSARY CATHOLIC PRIMARY SCHOOL

2. RESPONSIBILITIES OF SCHOOL, PARENTS, AND STUDENTS

RESPONSIBILITIES OF SCHOOL

- To ensure the whole school community is informed about the principles of the behaviour management policy.
- To ensure the school Behaviour Management Policy does not discriminate against any student.
- To ensure staff are clear about the extent of their disciplinary authority and receive necessary professional development on behaviour strategies.
- To support, praise and, as appropriate, reward students' good behaviour.
- To take all reasonable measures to protect the safety and well-being of staff and students, including preventing all forms of bullying and dealing effectively with reports and complaints about bullying.
- To ensure staff model respectful, courteous and honest behaviour.
- To promote positive behaviour through active development of students' social, emotional and behavioural skills.
- To keep parents informed of their child's behaviour.
- To record incidents of behaviour on SEQTA.
- To establish positive relationships between staff and students.

RESPONSIBILITIES OF PARENTS

- To respect the school Behaviour Management Policy and the disciplinary authority of school staff.
- To encourage their child to follow instructions by school staff and adhere to school rules, and the Student Code of Conduct
- To send their child to school each day punctually, suitably clothed, rested and ready to learn.
- To ensure school staff are aware of any educationally related or other personal factors that may impact upon their child's behaviour.
- To be prepared to work with the school to support their child's positive behaviour.
- To attend meetings with school staff, if requested, to discuss their child's behaviour.

HOLY ROSARY CATHOLIC PRIMARY SCHOOL

RESPONSIBILITIES OF STUDENTS

- To ensure that they abide by the Student Code of Conduct, in all their daily words, actions and thoughts.



HOLY ROSARY PRIMARY SCHOOL | DOUBLEVIEW

HOLY ROSARY SCHOOL STUDENT CODE OF CONDUCT

The students at Holy Rosary School have collaborated to identify how they would like to feel in their school community:

JOY-FILLED

At Holy Rosary School we want to feel joy-filled. In order for everyone to feel a sense of joy, we all need to:

- Show the Spirit of Jesus
- Treat others with kindness
- Smile at one another
- Give compliments
- Have a positive mindset

SAFE

At Holy Rosary School we want to feel safe. In order for everyone to feel safe, we all need to:

- Show the Spirit of Jesus
- Follow the school rules
- Use equipment in the way it is meant to be used
- Talk to a teacher if you feel unsafe or see something that isn't safe
- Look after one another

VALUED

At Holy Rosary School we want to feel valued. In order for everyone to feel valued, we all need to:

- Show the Spirit of Jesus
- Encourage others
- Smile at one another
- Include people in your games
- Say positive things to each other

3. CLASSROOM MANAGEMENT

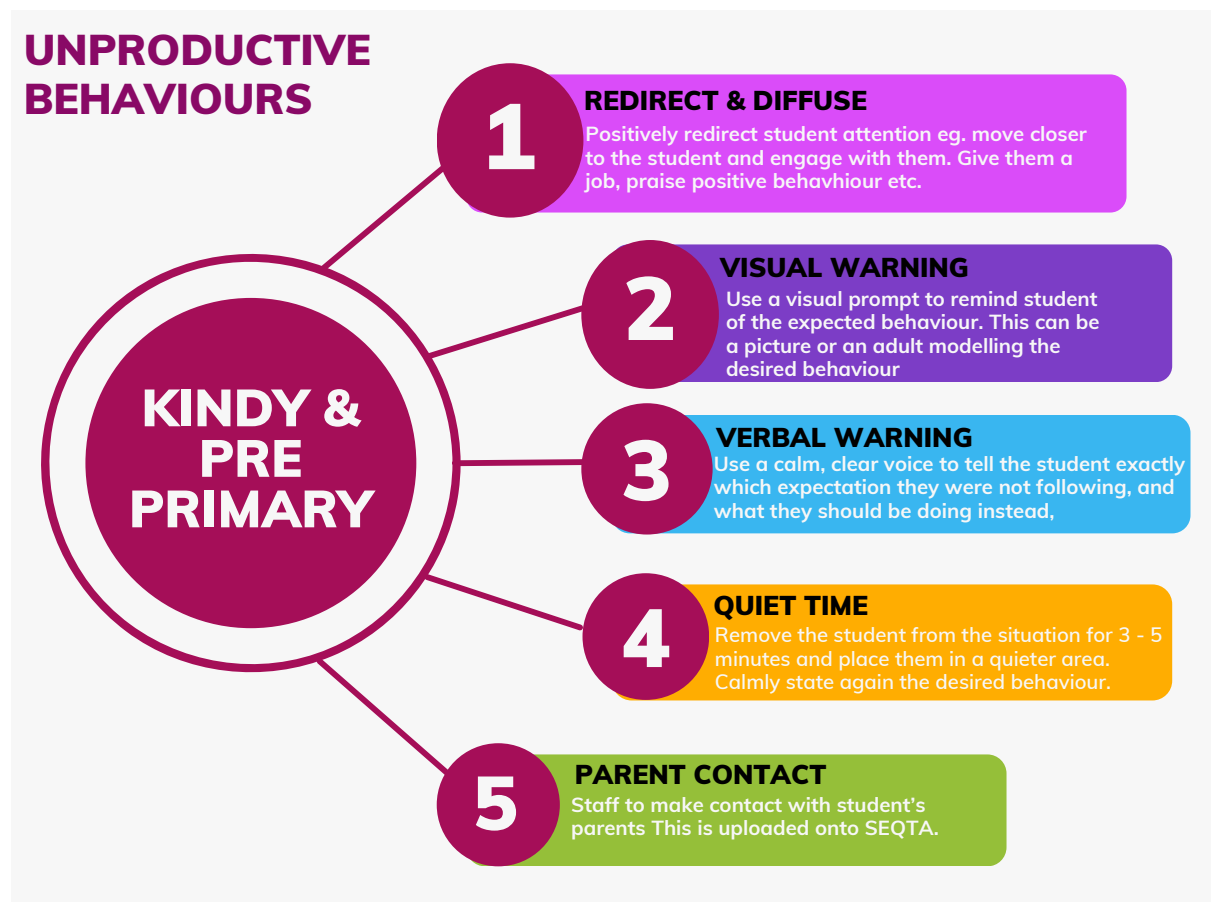
The management of behaviour at a class level is the responsibility of the class teacher and they will always use their discretion to deal with individual circumstances. All children contribute to devising classroom rules and hence must accept the responsibility of adhering to them.

POSITIVE REINFORCEMENT

All staff use a variety of strategies to reinforce appropriate behaviour. This can be decided by individual staff according to student needs. To acknowledge work of a high standard and exceptional behaviour, students may be sent to the Admin Team to celebrate their success and achievements.

WHOLE SCHOOL BEHAVIOUR MODEL

Where children repeatedly interfere with teaching and learning, despite all the positive efforts of the teacher, the following models will be adhered to. Please note that in instances of physical violence towards other students, staff may be required to escalate through these steps of management.



UNPRODUCTIVE BEHAVIOURS



UNPRODUCTIVE BEHAVIOURS



HOLY ROSARY CATHOLIC PRIMARY SCHOOL

In the unlikely event that the negative behaviour is happening regularly, the principal has the option to suspend or exclude the student from school, in line with CECWA Guidelines.

SUSPENSION

Suspension means temporary withdrawal of a student's right of attendance at the school.

It is a disciplinary measure that may be invoked by the Principal, where a student's conduct and behaviour are deemed to be prejudicial to the good order or reputation of the school.

Principals should discuss the proposed suspension with the parents of the student involved.

EXCLUSION

(Ref: CECWA Policy Statement Exclusion of Students for Disciplinary Reasons.)

Exclusion means total withdrawal of a student's right to attend a particular school i.e. termination of enrolment.

Exclusion is an extreme disciplinary step reserved for cases of gross misconduct, serious breaches of school rules, or behaviour that is persistently disruptive or contrary to the mission statement of the school. Exclusion is a sanction to be applied as a last resort, normally after all other measures have failed.

Careful consideration shall be given to the overall good of the individual student as well as to the welfare of the school community.

The decision to exclude a student shall be the responsibility of the Principal. The Principal or the Principal's delegate shall undertake an investigation based on the merits of the matter by providing a fair and unbiased hearing of the parties concerned.

No exclusion shall proceed unless the procedures outlined in the CECWA Policy Statement Exclusion of Students for Disciplinary Reasons have been adhered to.

4. POLICY REVIEW DATES

Last Dates Reviewed: 2020, 2023

Date to Review: 2026